

PropertyLine



2 Sallows Road

Dogsthorpe, Peterborough, PE1 4EU

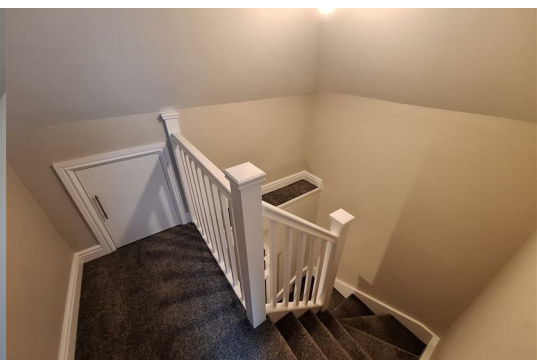
£1,250



Nestled on the charming Sallows Road in Peterborough, this delightful semi-detached bungalow offers a perfect blend of comfort and convenience. Spanning an inviting 828 square feet, the property features three well-proportioned bedrooms, making it an ideal choice for families or those seeking extra space for guests or a home office.

The bungalow boasts a spacious reception room, providing a warm and welcoming area for relaxation and entertaining. With two bathrooms, morning routines and family life are made easier, ensuring that everyone has their own space when needed.

The location is particularly appealing, offering a peaceful residential atmosphere while remaining close to local amenities, schools, and transport links. This property presents an excellent opportunity for those looking to enjoy single-storey living in a vibrant community.



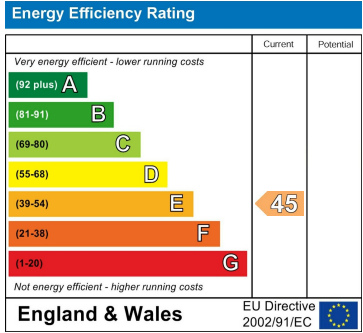
Area Map



Floor Plans



Energy Efficiency Graph



These particulars, whilst believed to be accurate are set out as a general outline only for guidance and do not constitute any part of an offer or contract. Intending purchasers should not rely on them as statements of representation of fact, but must satisfy themselves by inspection or otherwise as to their accuracy. No person in this firms employment has the authority to make or give any representation or warranty in respect of the property.